

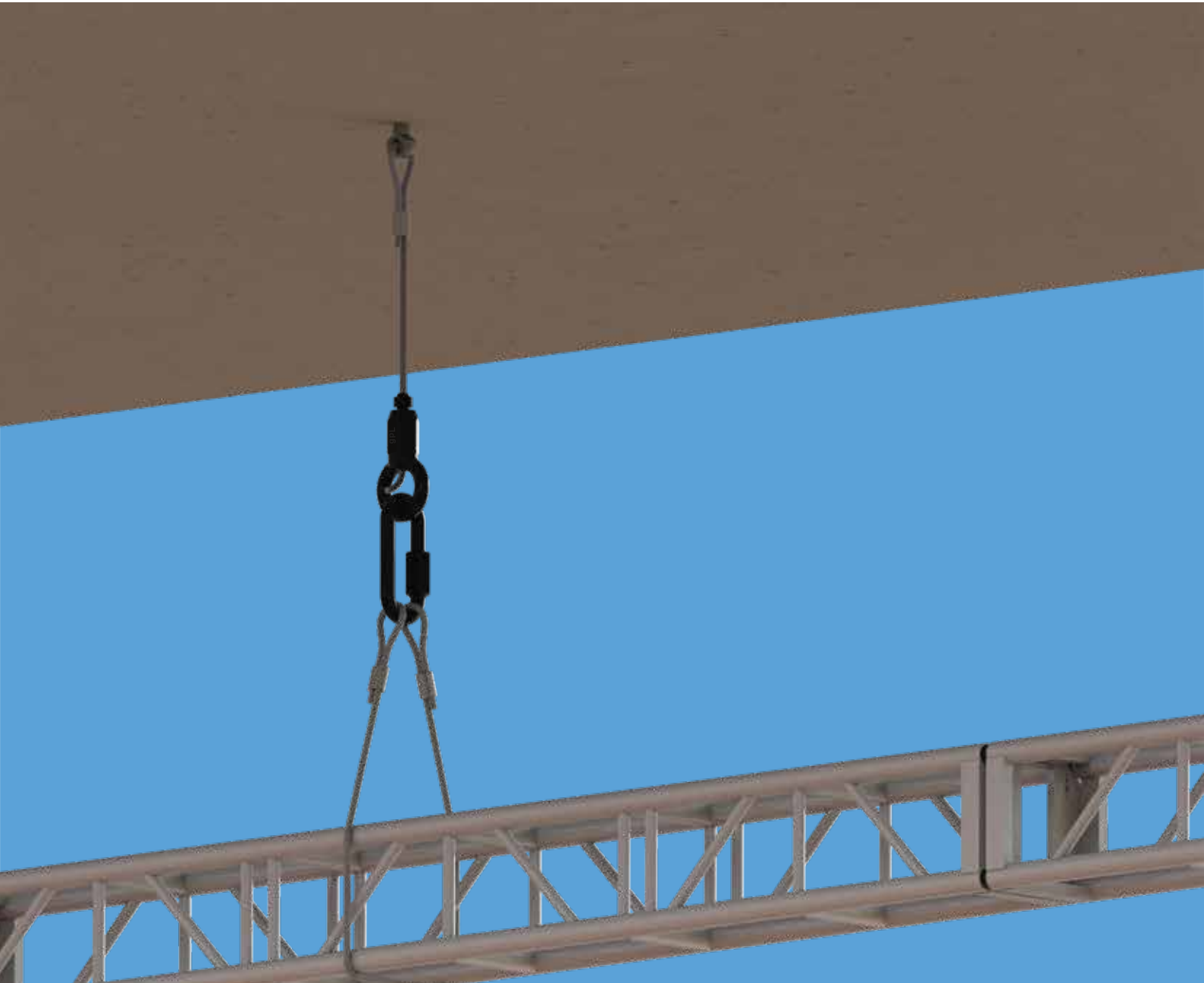


ISO 9001:2015



GPL-HEAVY DUTY

Gripper Range



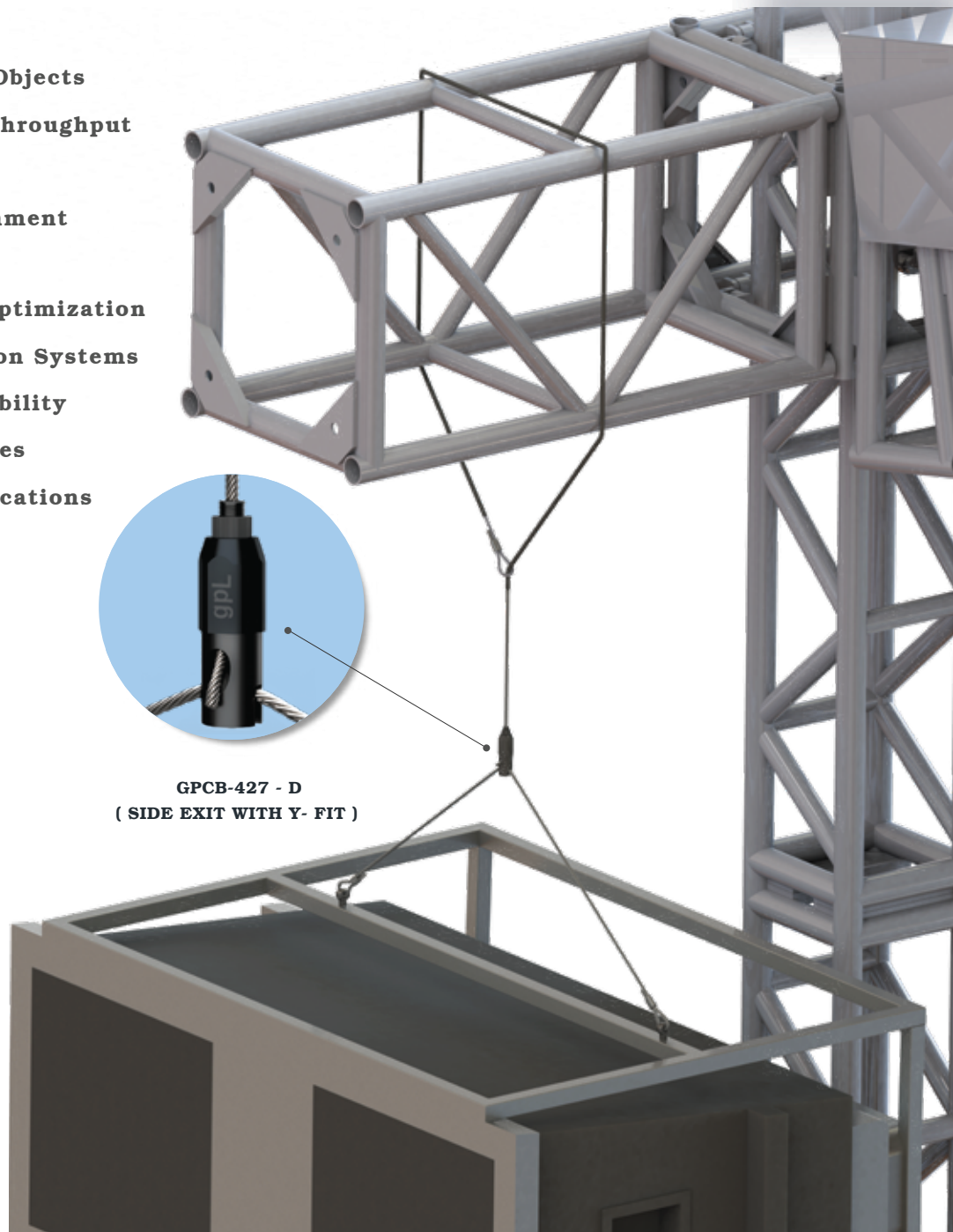
Introduction to Heavy duty grippers & their importance

The GPL Heavy-duty gripper comes with a 6-ball bearing mechanism which is a specialized mechanical device designed to securely grasp and manipulate heavy or robust objects in industrial and automation applications. This type of gripper incorporates a mechanism with six ball bearings, strategically positioned to enhance the gripper's strength, stability, and gripping capability.

The primary purpose of heavy duty grippers is to ensure a firm and secure grip on the load during lifting, moving, or positioning operations. They are commonly used in rigging, material handling, construction, manufacturing, shipping, and other industrial settings where the manipulation of heavy or bulky items is required.

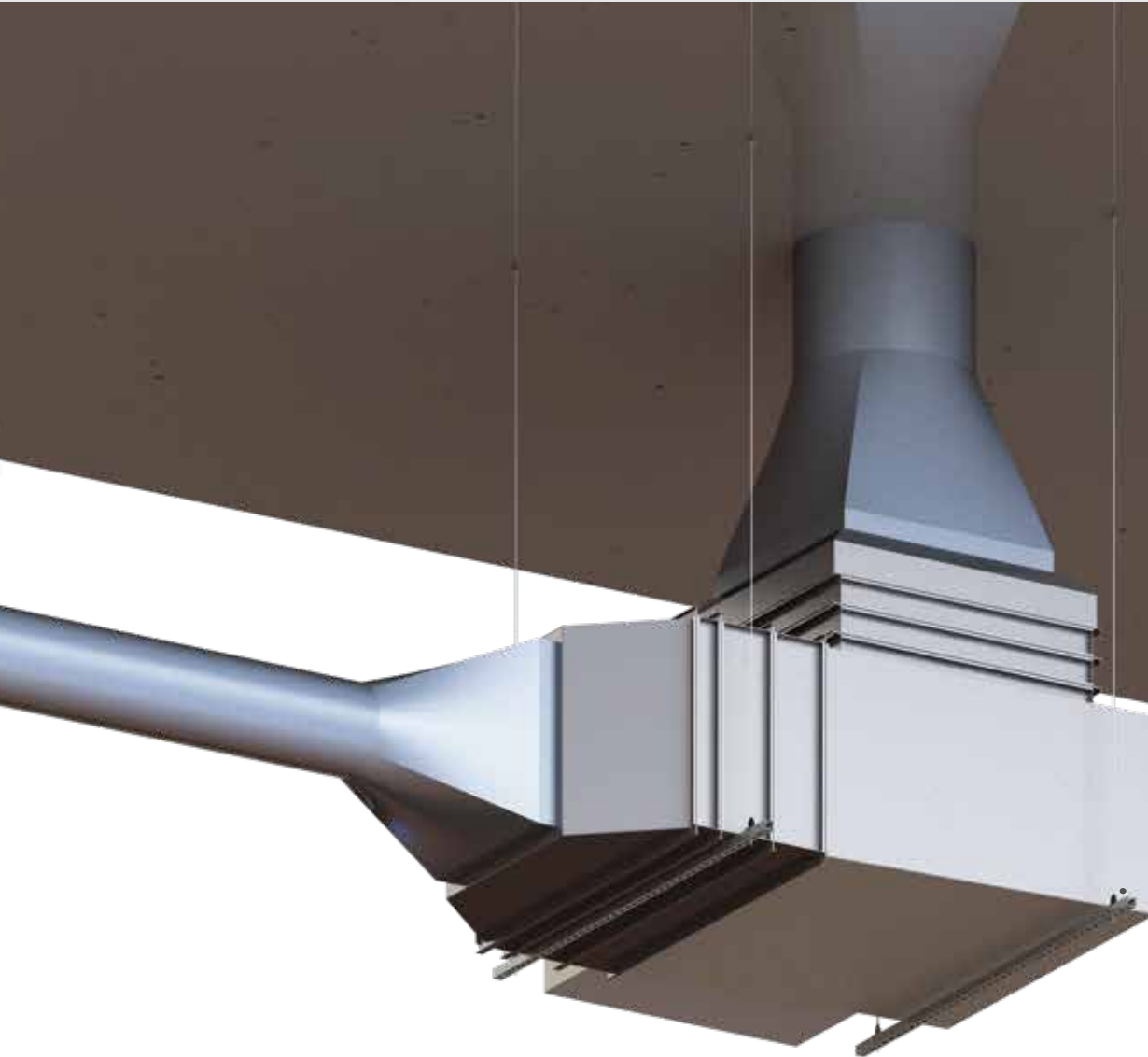
Heavy duty grippers play a crucial role in heavy load applications by providing a secure and reliable means to handle heavy loads and equipment. Their importance can be highlighted in various aspects of rigging and industrial applications.

1. **Efficient Handling of Heavy Objects**
2. **Enhanced Productivity and Throughput**
3. **Improved Worker Safety**
4. **Precise Positioning and Alignment**
5. **Versatility and Adaptability**
6. **Cost Savings and Resource Optimization**
7. **Compatibility with Automation Systems**
8. **High Load Capacity and Durability**
9. **Facilitating Complex Processes**
10. **Support for Specialized Applications**



GPCB-427 - D
(SIDE EXIT WITH Y- FIT)

Application



GPCB-427 - C
(BOTTOM EXIT WITH
CHANNEL NUT)

Heavy-duty grippers are mechanical devices designed to securely grasp, hold, or manipulate heavy objects in various applications. These grippers are typically used in industrial settings where they need to handle substantial loads and withstand significant forces. Here are some common applications of heavy-duty grippers:

- **Manufacturing and Assembly Lines**
- **Material Handling**
- **Robotic Applications**
- **Construction and Demolition**
- **Aerospace and Defense**
- **Automotive Industry**
- **Energy and Utilities**
- **Waste Management**

Heavy Duty



GPCB - 427 A
(STANDARD)



GPCB-427 - B
(BOTTOM EXIT WITH LOOP)



GPCB- 427 - E
(SIDE EXIT WITH TAIL)



GPCB-427 - D
(SIDE EXIT WITH Y- FIT)



GPCB-427 - C
(BOTTOM EXIT WITH
CHANNEL NUT)

Heavy Duty Gripper Series

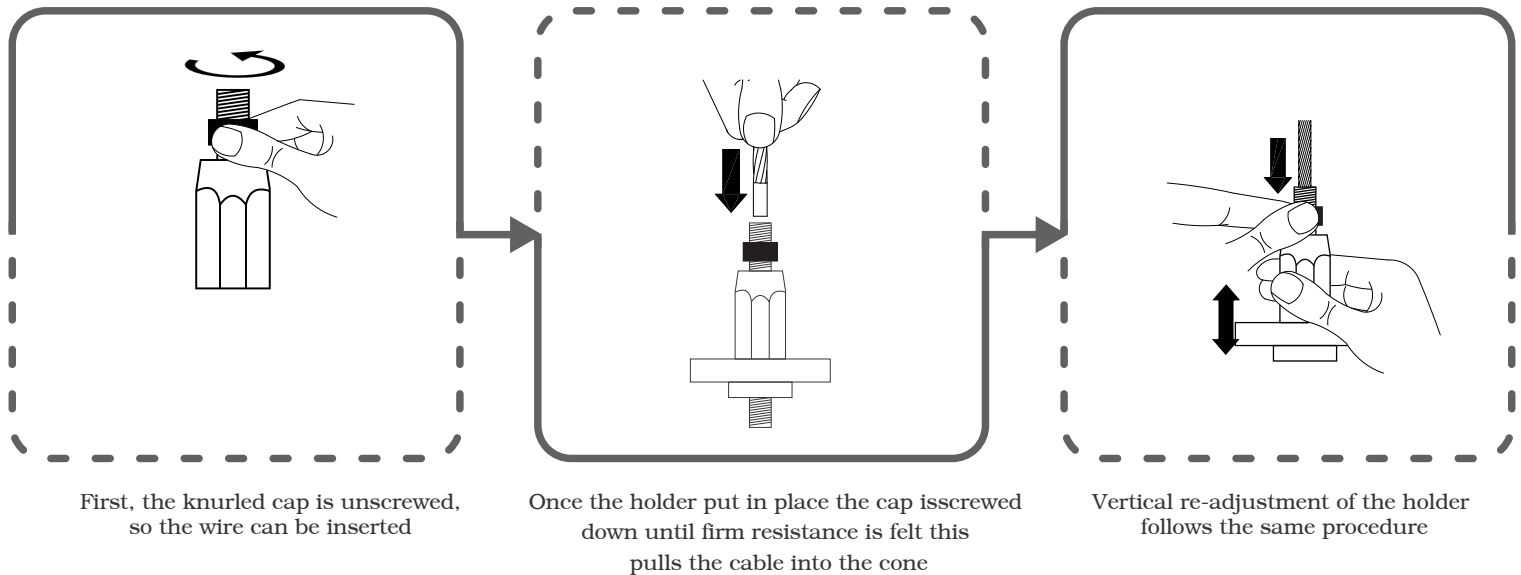
Series Code	Wire Size	Standard	Bottom Exit with Loop	Bottom Exit with Channel Nut	Side Exit with Y-FIT	Side Exit with tail
		A	B	C	D	E
GPCB - 427	4.0-5.0 mm	✓	✓	✓	✓	✓
GPCB - 422	6.0-8.0 mm	✓	✓	✗	✗	✗

Product Overview

Technical Information (Load Ratings)

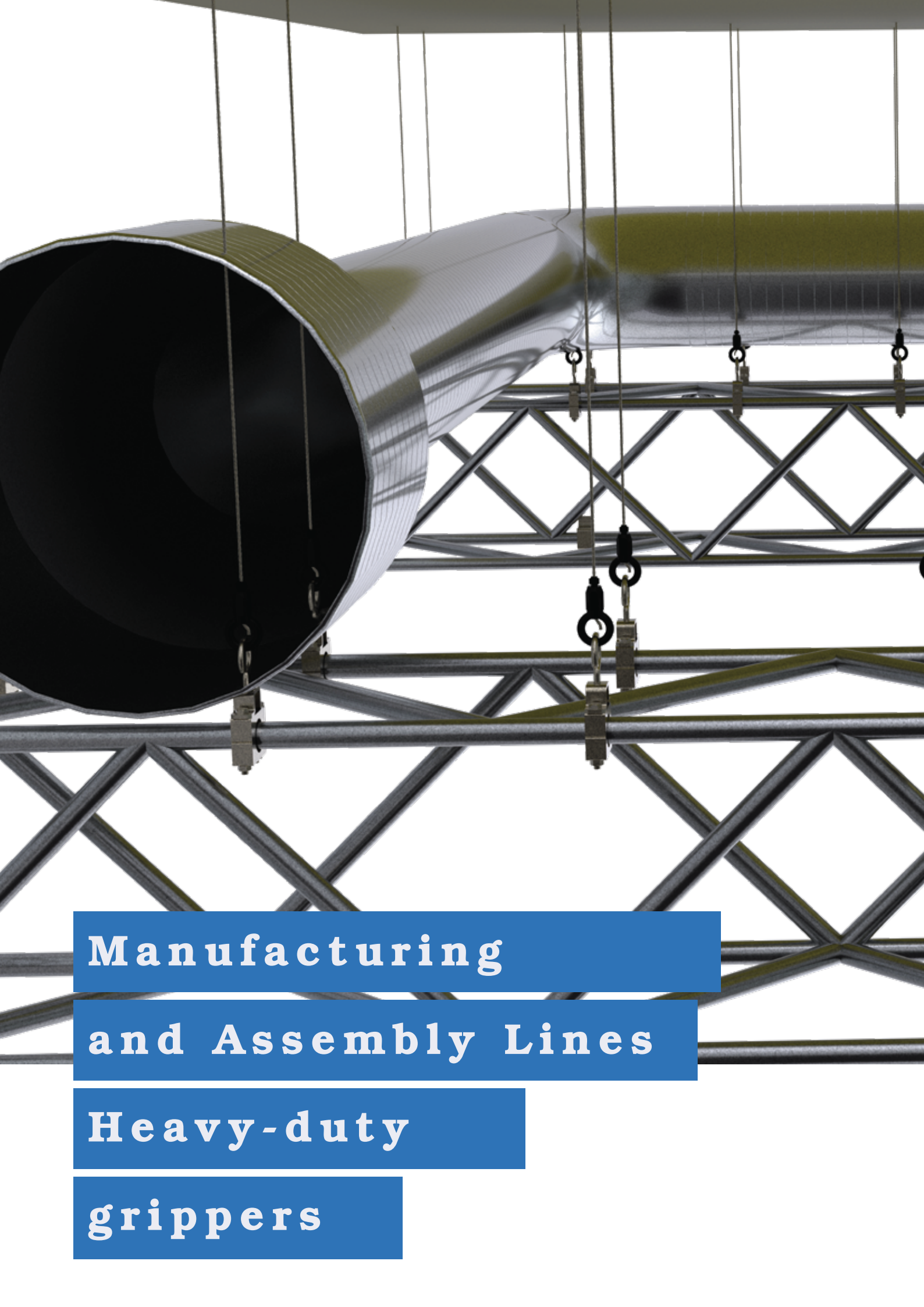
Series Code	Wire Size	Wire Tolerance	Wire Construction	Wire Material	Wire Breaking Strength
GPCB - 427	4.0mm/5-32"	+ 0.20 / -0mm	7x7	Galvanized Steel	750kg/1650lbs
	5.0mm/3-16"	+ 0.20 / -0mm	7x7	Galvanized Steel	1250kg/2750lbs
GPCB - 422	6.0mm/1-4"	+ 0.20 / -0mm	7x19	Galvanized Steel	1900kg/4180lbs
	8.0mm/5-16"	+ 0.20 / -0mm	7x19	Galvanized Steel	2400kg/5280lbs

Cable Assembly Instruction



Instruction for use

1. Use GPL 7X7 OR 7X19 construction steel galvanized wire rope.
2. While passing wire through a gripper, always allow wire to pass 2 to 3" beyond the gripper housing.
3. When trimming surplus wire, ensure at least 2 to 3" of wire are exposed or visible.
4. Wire should be cut using wire cutters.
5. The GPL Heavy Duty Grippers are ideal for temporary static suspensions across different environments; however, it's advised to avoid their use for permanent installations in outdoor settings or locations with chemical exposure such as indoor swimming pools and certain manufacturing facilities.
6. Do not allow the wires to enter or exit the grippers at an angle greater than 5°.
7. INSTALLATION MUST BE CARRIED OUT BY A QUALIFIED STRUCTURAL ENGINEER.
8. RECOMMENDED FOR STATIC LOAD APPLICATIONS ONLY.
9. THIS PRODUCT IS NOT RECOMMENDED FOR LIFTING LOADS.

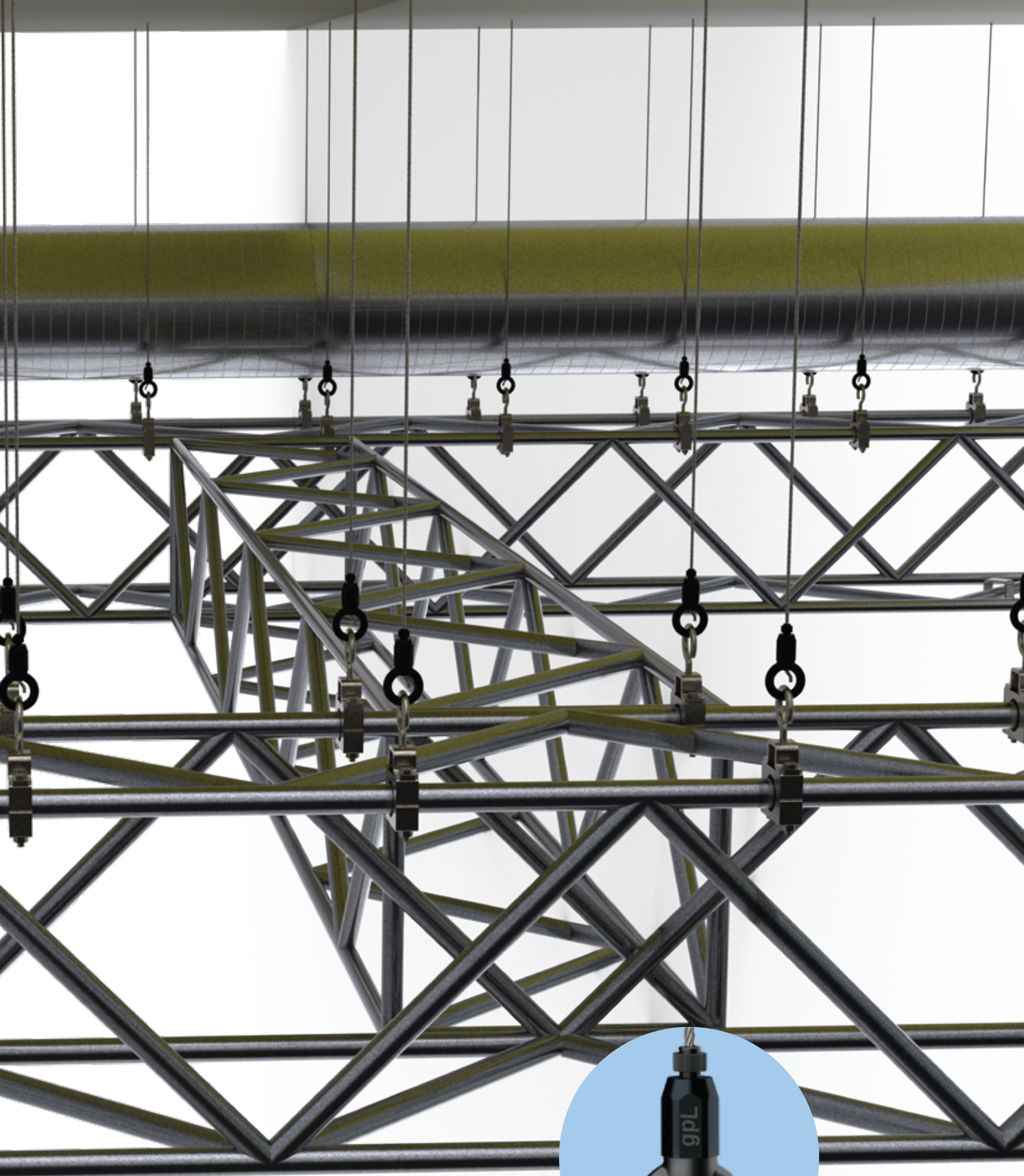


Manufacturing

and Assembly Lines

Heavy-duty

grippers



GPCB-427 - B
(BOTTOM EXIT WITH LOOP)

GPL GLOBAL PRESENCE



ISO 9001:2015



GOLDEN PEACOCK OVERSEAS LTD.

Corporate Office : 20A, NSEZ Noida-201305, UP, India Phone : 0120-4720251/54, mktg@goldenpeakock.com

www.goldenpeakock.com